

National Maritime College of Ireland

PART-TIME COURSES 2024-2025

Supply Chain | Maritime Operations



MTU

Ollscoil Teicneolaíochta na Mumhan
Munster Technological University

+353 21 433 5607
NMCI.Admissions@mtu.ie
Ringaskiddy, Co.Cork
P43 XV65 Ireland
www.nmci.ie

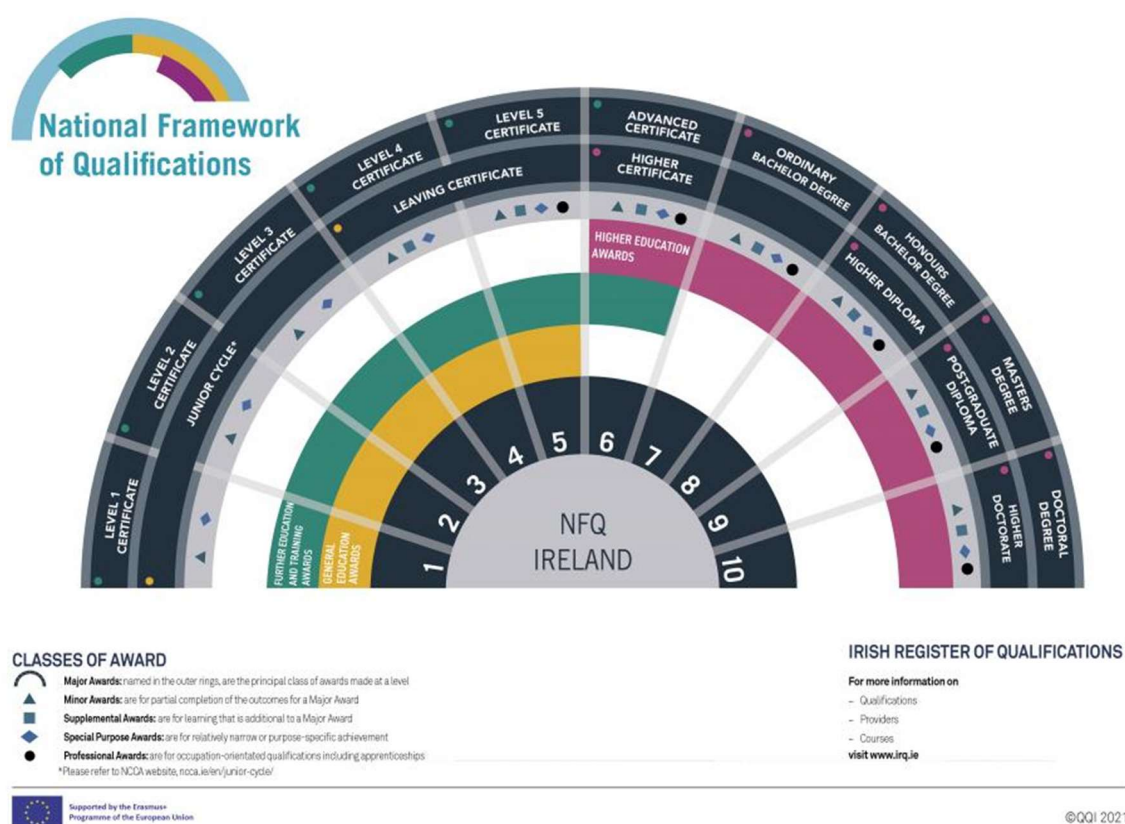


Introduction

This brochure is primarily intended for students seeking admission to Part-time undergraduate and postgraduate courses/programmes at the National Maritime College of Ireland (NMCI).

Eligibility

To gain entry to a programme of study, an applicant must typically have a relevant qualification on the National Framework of Qualifications (NFQ) one level below the programme they are enrolling in. For instance, to gain entry to a Level 8 NFQ programme, an applicant would generally possess a qualification at Level 7 NFQ. Where an applicant does not possess a qualification 1 level below, they may be able to enrol using the RPL process, see further detail below.



If you are not sure which course would be most suitable for your level of qualifications and experience, you could email your cv to our course coordinator for preliminary assessment.

Recognition of Prior Learning

Alternatively, a candidate's previous experience and suitability for a course can be assessed through the recognition of prior learning (RPL) process in MTU. Applicants may need to complete a mapping exercise and/or interview as part of the RPL process before registering for a part-time course. All queries in relation to RPL must be directed to course coordinators in the first instance.

Admission

To apply for a part-time undergraduate or postgraduate programme candidates must fill out an online form on MTU website and submit the following documents:

- curriculum vitae;
- transcripts of previous qualifications;
- visa for international students.

All documents must be submitted in PDF format.

Once the online application is submitted it will be shared electronically with the relevant Course Coordinator who will assess if the candidate's qualifications and experience are sufficient to enrol on the chosen course.

Candidates applying for a Logistics Associate Apprenticeship programme are required to register their interest in becoming an apprentice on LAA website.

Please note, submission of an application form does not confirm admission to the course.

Registration

Once the candidate's application is approved an offer of place is made. If the candidate accepts the offer the candidate is registered as an MTU student and provided with student email account. This email account will be used for all further communication.

Tuition Fees and Funding

The tuition fees quoted in the brochure are payable on registration. The tuition fees cover the cost of tuition and formal written examinations. Additional fee applies for any repeat examinations.

Please note that applicants may be required to pay an acceptance fee online at the time of offer. This fee is deductible from the overall tuition fee.

Many of our courses are available through Springboard and Skillnet funding providers. Candidates applying for Springboard funding must first apply to Springboard and then complete MTU online application.

Springboard Eligibility	Status	Springboard Funding	Acceptance fee*
Eligible	Employed	90%	10%
Eligible	Unemployed	100%	0

*Fee is payable to MTU Fees Office

Candidates applying for Skillnet funded courses will need to fill out an online eligibility assessment form for Skillnet funding. The candidates will then be invited to complete MTU online application. Skillnet subsidised fees are payable directly to the funding provider.

Programmes Overview

Supply Chain |

NFQ Level	Programme	Page
Level 6	Logistics Associate Apprenticeship*	5
Level 7	Certificate in Customs and Global Trade Management	6
Level 7	Bachelor of Business in Supply Chain and Transport Management	7
Level 8	Bachelor of Business Honours in Global Supply Chain Management	8
Level 8	Certificate in Biopharmaceutical Supply Chain Management*	9
Level 9	Postgraduate Diploma in Science in Global Sustainable Supply Chain Management	10
Level 9	Master of Science in Global Sustainable Supply Chain Management	11

* Programme is delivered by the Process, Energy & Transport Department.

Maritime Operations |

NFQ Level	Programme	Page
Level 8	Certificate in Port and Offshore Energy Operation Management	12
Level 9	Certificate in Maritime Law & Risk Management	13
Level 9	Master of Science in Maritime Operations	14

Blended Online Delivery

Part-time programmes are taught via a blended delivery model which includes both in-person and online lectures. In-person classes are scheduled in the evenings and on Saturdays to facilitate attendance. Online classes are not recorded to encourage 'open discussion and freedom to speak and share knowledge'. Sharing real-life up-to-date examples provides a rich learning environment.

Language

All tuition and examinations at NMCI are conducted in English. All applicants whose first language is not English must provide evidence of English language proficiency. The recommended level of English language proficiency to undertake our courses is IELTS 6.5 with no section below 6.0 or equivalent.

National Maritime College of Ireland, MTU, Ringaskiddy, Co. Cork, P43 XV65, Ireland
t: +353 (0)21 4335600 e: NMCI.Admissions@mtu.ie w: www.nmci.ie

51° 50'00 N

008° 18'26 W

Supply Chain | PET Department

Logistics Associate Apprenticeship (LAA)

NFQ Level 6

120 ECTS credits

The Logistics Associate Apprenticeship will appeal to candidates seeking to combine academic education and hands-on experience across the Freight, Logistics, Shipping, and Distribution industries. The program provides apprentices with access to third-level education, while earning a salary and gaining valuable industry experience. Upon successful completion, apprentices will earn an internationally recognised Higher Certificate in Logistics. This qualification opens doors to diverse career opportunities and further Level 7 and Level 8 degree programs within the logistics and supply chain sectors.

Programme duration

2 years

Start date

September 2025

Delivery

One day per week blended

Online – 60%

MTU Bishopstown Campus – 40%

Cost

Fees subsidised as agreed with host organisation

Number of places

24

Point of Contact

Efce Van Heerden

Efce.VanHeerden@mtu.ie

info@laa.ie

Programme of Study

The program combines full-time employment with a leading logistics organization and one day of academic study. Apprentices will gain exposure to multiple sectors, allowing them to make informed decisions about their future career direction. Each apprentice is paired with a workplace mentor, an industry expert trained to provide guidance and support throughout the program.

Year 1

- Introduction to Logistics & SCM
- Introduction to Customer Service
- Communications and Professional Skills
- Introduction to Customs and Int. Trade
- Logistics /SCM Information Systems
- Supply Chain Performance Management

Year 2

- Road Freight Logistics
- Air Freight Logistics
- Sea Freight Logistics
- Distribution & Warehousing
- Quantitative Analysis
- Work-based Project

Apply Now:

Please click or scan the QR-Code to register your interest in becoming an apprentice.



National Maritime College of Ireland, MTU, Ringaskiddy, Co. Cork, P43 XV65, Ireland
t: +353 (0)21 4335600 e: NMCI.Admissions@mtu.ie w: www.nmci.ie

51° 50'00 N

008° 18'26 W

Supply Chain | Certificate in Customs and Global Trade Management Special Purpose Award

NFQ Level 7

10 ECTS credits

This programme is for candidates who hold a Level 6 qualification and are working or aspiring to work in logistics or international trade. It is especially suitable to those engaging with freight forwarding and customs management. The programme contains Level 7 BBus in Supply Chain and Transport Management and Level 8 BBus Honours in Global Supply Chain Management modules that can be counted towards acquiring the above degree qualifications.

Programme duration

1 Semester

Cost*

€1,200

Start date

January 20th, 2025

Number of places

24

Delivery

Online - one evening per week

Point of Contact

Dr Brian Devitt

Brian.Devitt@mtu.ie

* Acceptance fee of €300 applies to all candidates.

Programme of Study

The programme provides a review of Customs Law on International Trade grounded in aspects of European Union Customs Law and Regulations that govern International Trade. The role, function, key challenges and interaction of global trade and customs policies are examined in the context of key influencers such as WTO, WCO, single market as well as the implications of Brexit.

Semester 1

- Global Trade and Customs Law
- International Supply Chain in the Customs Environment

Apply Now

Please click or scan the QR-Code to apply online. The application deadline is January 24th, 2025.



National Maritime College of Ireland, MTU, Ringaskiddy, Co. Cork, P43 XV65, Ireland
t: +353 (0)21 4335600 e: NMCI.Admissions@mtu.ie w: www.nmci.ie

51° 50'00 N

008° 18'26 W

Supply Chain |

Bachelor of Business in Supply Chain and Transport Management

NFQ Level 7

60 ECTS credits

This qualification is a one year step up degree for participants holding the Chartered Institute of Logistics and Transport (CILT) Diploma, Logistics Associate Apprenticeship; or IIPMM (Procurement and Supply Chain Management), or an equivalent Level 6 or Level 7 qualification in a relevant discipline. On course completion the candidates will have in-depth knowledge of emerging theories, concepts and methods in the field of Supply Chain Management and will be able to assist organisations in developing and sustaining competitive advantage.

Programme duration

1 Year, 2 semesters

Cost*

€3,900

Start date

January 20th, 2025
September 2025

Number of places

24

Delivery

Online - 3 evenings per week
On campus - 3 Saturdays per semester

Point of Contact

Dr Brian Devitt
Brian.Devitt@mtu.ie

* Reduced fee of €2,800 is available through Skillnet to eligible candidates.

Programme of Study

Semester 1

- Business & SC Strategy
- Managing Performance Measurement
- Management Accounting & Managerial Finance
- Quality & Lean Operations
- Transport & Supply Chain
- Warehousing & Inventory Management

Semester 2

- Advanced Operations Management
- Global Trade & Customs Law
- Information Technology & SC
- Leadership & Communications SC
- Procurement in Supply Networks
- Structure & Human Resources

Apply Now

Please click or scan the QR-Code to apply online. The application deadline is January 24th, 2025.



Supply Chain |

Bachelor of Business Honours in Global Supply Chain Management

NFQ Level 8

60 ECTS credits

The programme is designed to broaden and deepen the knowledge and skill base of the Level 7 Supply Chain Management degree graduates. This programme will also appeal to Business, Engineering and IT graduates who have some experience in Logistics and Supply Chain Management. Through elective modules, candidates can earn the embedded Certificate in Lean Sigma Green Belt for Service and Operational Productivity Improvement and get equipped with practical tools for driving continuous improvement in any organisation.

Programme duration

1 Year, 3 semesters

Cost*

€4,800

Start date

September 2025

Number of places

24

Delivery

Online - three evenings per week

On campus - 3 Saturdays

Course Coordinator

Ray Cronin

Ray.Cronin@mtu.ie

* Springboard funding is available to eligible candidates. Acceptance fee of €500 applies to Springboard eligible candidates who are in employment and to candidates who are not eligible for Springboard funding.

Programme of Study

Semester 1

- Advanced Financial Planning
- Global Supply Chain Management
- Research Project Proposal
- Supply Networks Optimisation
- Lean Sigma Fundamentals (E)
- Strategic Procurement Mnt (E)
- Free Choice Module (E)

Semester 2

- Enterprise Systems
- International SC in the Customs Environment
- Transport Planning & Logistics
- Basic Stats & Lean Sigma Tools (E)
- Lean Sigma GB Project (E)
- Port Operations Management (E)
- Project Management in SCM (E)
- Free Choice Module (E)

Semester 3 is allocated for Research Dissertation

Apply Now

Please click or scan the QR-Code to apply online. The application deadline is TBC.



National Maritime College of Ireland, MTU, Ringaskiddy, Co. Cork, P43 XV65, Ireland
t: +353 (0)21 4335600 e: NMCI.Admissions@mtu.ie w: www.nmci.ie

51° 50'00 N

008° 18'26 W

Supply Chain | PET Department

Certificate in Biopharmaceutical Supply Chain Management Special Purpose Award

NFQ Level 8

20 ECTS credits

The programme is designed to broaden and deepen the knowledge and skill base of graduates of a Level 7 degree in Supply Chain Management or in Business and Engineering disciplines who already have experience of Logistics and Supply Chain Management. It is predominantly beneficial for professionals in Ireland's pharma sector and specifically aims to further develop the skillset to satisfy Munster region's Biopharma cluster. This program responds to the growing demand for expertise in SCM, particularly in response to Brexit and Biopharma industry needs.

Programme duration

2 Semesters

Start date

September 2025

Delivery

Online - two evenings per week

Cost*

€2,500

Number of places

20

Programme Coordinator

Efce van Heerden

Efce.vanHeerden@mtu.ie

* Springboard funding is available to eligible candidates. Acceptance fee of €300 applies to Springboard eligible candidates who are in employment and to candidates who are not eligible for Springboard funding.

Programme of Study

The programme was updated in collaboration with industry representatives from the Biopharmaceutical, Pharmaceutical, and Medical Devices industries. The advanced modules delivered in this programme need specific graduate prior knowledge, principally a broad understanding of end-to-end SCM with particular emphasis on the Biopharmaceutical, Pharmaceutical or similar industry sectors.

Semester 1

- Global Sustainable SCM
- Strategic Sustainable Procurement Management

Semester 2

- International Supply chain in the Customs Environment
- Transport Planning and Logistics Management

Apply Now

Please click or scan the QR-Code to apply online. The application deadline is TBC.



National Maritime College of Ireland, MTU, Ringaskiddy, Co. Cork, P43 XV65, Ireland
t: +353 (0)21 4335600 e: NMCI.Admissions@mtu.ie w: www.nmci.ie

51° 50'00 N

008° 18'26 W

Supply Chain |

Postgraduate Diploma in Science in Global Sustainable Supply Chain Management

NFQ Level 9

60 ECTS credits

This programme will appeal to the communities of Business, Engineering, Science, IT and Maritime Sector graduates (L8/L9) who have some experience of Logistics and Supply Chain Management and wish to progress their careers with advanced senior management skills in the discipline. The programme follows Semesters 1 and 2 of the MSc in Global Sustainable Supply Chain Management and offers candidates a Springboard funded option of study.

Programme duration	Cost*
1 Years, 2 semesters	€5,000
Start date	Number of places
January 20 th , 2025	24
Delivery	Course Coordinator
Online - 3 evenings per week On campus - 3 Saturdays	Dr Jane O’Keeffe Jane.OKeeffe@mtu.ie

* Springboard funding is available for eligible candidates. Acceptance fee of €500 applies to Springboard eligible candidates who are in employment and to candidates who are not eligible for Springboard funding.

Programme of Study

Semester 1	Semester 2
<ul style="list-style-type: none"> • Building Sustainable SC • Research Methods & Proposal • Resilience & Agility in GSCs • Strategy & SC Financial Management • Developing Leadership & Mnt (E) • Port Operations Mnt (E) 	<ul style="list-style-type: none"> • Analytics to Optimise Supply Networks • Climate Change & Logistics/SCM • ERP & Business Intelligence • GSC Operations: Seminar series • Offshore Renewable energy PM (E) • Strategic Procurement Management (E)

Apply Now

Please click or scan the QR-Code to apply online. The application deadline is January 24th, 2025.







Supply Chain |

Master of Science in Global Sustainable Supply Chain Management

NFQ Level 9

90 ECTS credits

The programme is designed for candidates holding a Level 8 Honours degree qualification in the areas of Business, Engineering, Science, and IT. The programme will also appeal to Maritime Sector graduates who have some experience of Logistics and Supply Chain Management and wish to progress their careers with advanced senior management skills in the discipline.

Programme duration

1.5 Years, 3 semesters

Cost*

€8,000

Start date

January 20th, 2025

Number of places

24

Delivery

Online - 3 evenings per week

On campus - 3 Saturdays

Course Coordinator

Dr Jane O'Keeffe

Jane.OKeeffe@mtu.ie

* This programme is not funded. Candidates wishing to avail of Springboard funding are recommended to apply for the Post Graduate Diploma in Science in Global Sustainable Supply Chain Management, which covers modules from Semesters 1 and 2.

Programme of Study

Semester 1

- Building Sustainable SC
- Research Methods & Proposal
- Resilience & Agility in GSCs
- Strategy & SC Financial Management
- Developing Leadership & Mnt (E)
- Port Operations Mnt (E)

Semester 2

- Analytics to Optimise Supply Networks
- Climate Change & Logistics/SCM
- ERP & Business Intelligence
- GSC Operations: Seminar series
- Offshore Renewable energy PM (E)
- Strategic Procurement Management (E)

Semester 3 is allocated for Research Dissertation in the fields of Sustainable Supply Chain Management and Maritime Operations.

Apply Now

Please click or scan the QR-Code to apply online. The application deadline is January 24th, 2025.



National Maritime College of Ireland, MTU, Ringaskiddy, Co. Cork, P43 XV65, Ireland
t: +353 (0)21 4335600 e: NMCI.Admissions@mtu.ie w: www.nmci.ie

51° 50'00 N

008° 18'26 W

Maritime Operations |
Certificate in Port and Offshore Energy Operation Management
Special Purpose Award

NFQ Level 8
10 ECTS credits

The programme will appeal to candidates wishing to take on roles such as port managers, offshore energy project managers, maritime logistics coordinators, and sustainability officers within maritime and offshore energy companies. While this programme does not provide a direct entry into the NMCI MSc in Global Sustainable SCM and MSc in Maritime Operations programmes it is a micro-credential contained within both programmes encouraging continuing education.

Programme duration 2 semesters	Cost* €850
Start date January 20 th , 2025 September 2025	Number of places 20
Delivery Online - one evening per week	Course Coordinator Dan Manning Dan.Manning@mtu.ie

* Reduced fee of €450 is available through Skillnet to eligible candidates.

Programme of Study

Semester 1 <ul style="list-style-type: none">Offshore Renewable Energy Project Management	Semester 2 <ul style="list-style-type: none">Port Operations Management
--	--

Apply Now

Please click or scan the QR-Code to apply online. The application deadline is January 24th, 2025.



Maritime Operations |
Certificate in Maritime Law & Risk Management

NFQ Level 9
20 ECTS credits

The programme will appeal to candidates holding Level 7 or Level 8 degree and professional Maritime qualifications wishing to gain advanced legal knowledge and risk management expertise to meet the Maritime industry’s regulatory and operational demands. This programme is a micro-credential, contained within NMCI Master of Science in Maritime Operations programme.

Programme duration 12 weeks	Cost* €850
Start date January 20 th , 2025 September 2025	Number of places 20
Delivery Online – one evening per week	Course Coordinator Ciaran McCarthy CiaranJ.McCarthy@mtu.ie

* Reduced fee of €450 is available through Skillnet to eligible candidates.

Programme of Study

Semester 1	Semester 2
<ul style="list-style-type: none"> Maritime Operations Law 	<ul style="list-style-type: none"> Maritime Surveying & Risk Management

Apply Now
Please click or scan the QR-Code to apply online. The application deadline is January 24th, 2025.






Maritime Operations | Master of Science in Maritime Operations

NFQ Level 9
90 ECTS credits

The programme is aimed at candidates with a previous Level 8 Major Award, in Nautical Science, Engineering, IT, Business, Finance, Marine Engineering, and other disciplines and work experience or exposure to ports, shipping, or logistics management activities. Candidates with a Level 7 Major Award combined with Master Unlimited or Chief Engineer Unlimited CoC can enter the programme directly. The programme is designed for candidates wishing to qualify for senior positions in maritime management.

Programme duration 2 Years, 3 semesters	Cost* €8,500
Start date January 20 th , 2025 September 2025	Number of places 20
Delivery Online - 3 evenings On campus - 3 Saturdays	Course Coordinator Dan Manning Dan.Manning@mtu.ie

* Reduced fee of €4,500 is available through Skillnet to eligible candidates.

Programme of Study

Semester 1	Semester 2
<ul style="list-style-type: none"> • Future Maritime Technologies • Maritime Operations Law • Port Operations Management • Climate Change and Logistics/SCM (E) • Offshore Renewable Energy PM (E) 	<ul style="list-style-type: none"> • Maritime Surveying and Risk Mnt • Research Methods and Proposal • Strategy and SC Financial Management • Building Sustainable Supply Chain (E) • Developing Leadership and Mnt (E)

Semester 3 is allocated for research in the field of Sustainable Supply Chain Management and Maritime Operations.

Apply Now

Please click or scan the QR-Code to apply online. The application deadline is January 24th, 2025.



Attendance

Typically lectures (online & in-person) are not mandatory for part-time adult learners. The important aspect is to stay on top of the class work and discuss with colleagues any classes you may miss. We recommend attending all the in-person classes to take full advantage of networking with colleagues and invited industry professionals.

Assessment

Continuous assessment including presentations, reports, essays, and research projects. Online or in-person examinations take place at the end of each academic semester.

Cancellation Policy

In the event of withdrawing from a course the student must contact NMCI Administration Office and complete an online withdrawal form. Refund options may vary depending on the course, date of withdrawal and the funding provider.

Accommodation

NMCI campus is non-residential. Students are responsible for arranging accommodation privately. NMCI campus is located 18 km outside of Cork in Ringaskiddy.

Visa and Immigration

Non-EU students who do not require a visa for Ireland are eligible to apply. It is the student’s responsibility to organise private health insurance and ensure full compliance with immigration regulations. It is the student’s responsibility to register with the Irish Immigration Service upon entry to Ireland.

Contact Us

Maritime Studies Department

National Maritime College of Ireland
Ringaskiddy, Co. Cork
P43 XV65 Ireland
T: +353 21 4335600
E: NMCI.Admissions@mtu.ie
W: www.nmci.ie

Process, Energy & Transport Department

Munster Technological University
Bishopstown, Cork
T12 P928 Ireland
T: +353 21 433 5150
E: pet.deptcork@mtu.ie
W: <https://pet.mtu.ie/>